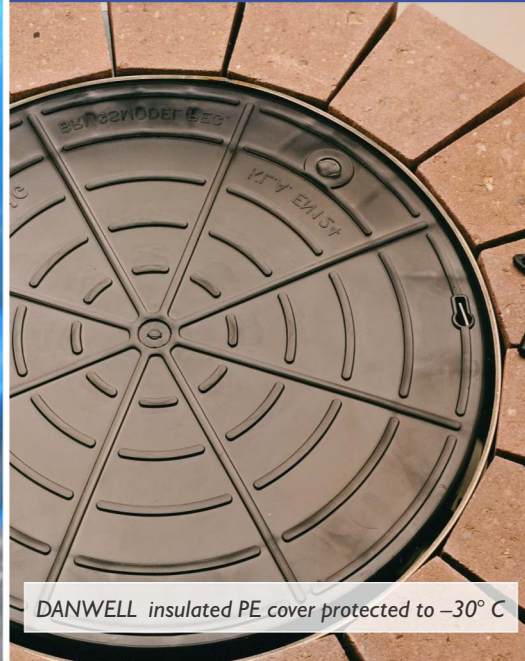


# DANWELL

## Leading Supplier of Water Meter Boxes



Technical installation



DANWELL insulated PE cover protected to  $-30^{\circ}\text{C}$

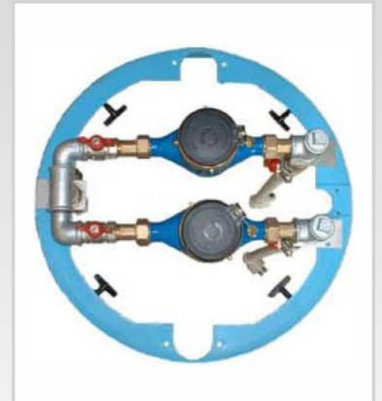


DANWELL Water Meter Installation

DANWELL specializes in production and supply of insulated water meter boxes since 1994. We have been the trusted partner of water industry sector for decades. In Denmark, water meters are mandatory for all customers. It must be installed in accessible areas at the border of the property and public road to allow closure of the water supply for any necessary repair of the pipeline or for any eventual installation of tapping tees.



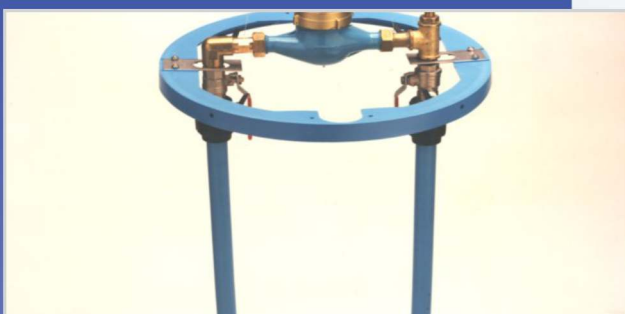
One water meter



Two water meters

## Guarantees Frost Protection!

With DANWELL's insulated meter box, we guarantee frost protection of the meter and all other inside technical installation (Water Pump, Water-level Pipes, Valves, Heating pipes from Ground, Cable connection). The insulating material for water meter boxes has a density of  $20\text{ kg / m}^3$ , equipped with an insulating chamber of  $700\text{ mm / }27,559''$  height, at a relevant temperature of  $0^{\circ}\text{C}$ . It is easy to assemble and install. Today, our insulated water meter boxes are installed in countries like Germany, Poland, Slovenia, Latvia, Lithuania, Czech Republic, Iceland, The Netherlands, Serbia, Russia and Georgia.



# METER BOX

## FOR BURIED WATER METERS

Depth. 750 mm. Other Depths are also possible.

Internal diameter of chamber: 750 mm

Internal diameter of opening: 400 mm

Depth of insulated chamber: 700 mm

Total depth including bottom pipes, standing and cover: possible +450 mm

Materials: HDPE polyethylene and polypropylene



# BIG METER BOX



## FOR WATER METER FROM 3"

install an our meter model WDEK30 with impulse device; this impulse device has a electric wire long 3 meters, at the end of this wire you can link the our impulse counter (if you need more length for the wire, you can add a normal electric wire).

# ALTERNATIVE MODEL

DANLAG/ DANLAAG Danlåg Cover and (HDPE) Corrugated Plastic Pipe with 400 mm inside. This cover can be made with or without insulation.

### Application

- ◆ Municipal storm water sewers, included discharge from premises
- ◆ Road drainage
- ◆ Culverts

### Properties, Raw Material, Approval

- ◆ Pipe class 5 to DIN 16 961
- ◆ SN 8 to EN ISO 9969 and pr EN 13476-1
- ◆ PE-HD

### Advantages for operators

- ◆ Suitable for use under low or high depths of cover
- ◆ Appropriate to extreme traffic loads
- ◆ Resistant to high pressure jetting
- ◆ Easy to service and maintain
- ◆ Durable

